



A.

GENERAL ENROLLMENT

ACADEMIC YEAR 2022-23

Undergraduate and Graduate Students

HEADCOUNT ENROLLMENT

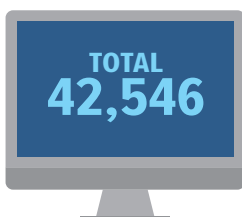
UG 2,612*
+
GR 310

*7 UG students graduated and started a GR program during the academic year.

ENROLLMENT STATUS



TOTAL ENROLLED UNITS

UG 38,940
+
GR 3,606

GENDER



MALE 18%

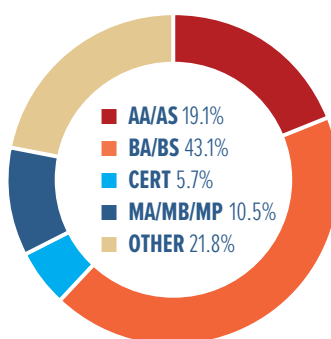


FEMALE 79%

DEMOGRAPHICS OF STUDENTS

Hispanics of Any Race	45%
White	19%
Black or African American	17%
Asian	9%
Race and Ethnicity Unknown	4%
Two or More Races	4%
Native Hawaiian or Other Pacific Islander	1%
American Indian or Alaska Native	1%

ACADEMIC GOALS



NEW STUDENTS

44% | 1,269

UG 1,163 + GR 106



OTHER SIGNIFICANT DEMOGRAPHICS

80.7%
FAFSA Applied25.2%
Single Parent*41%
First Generation*

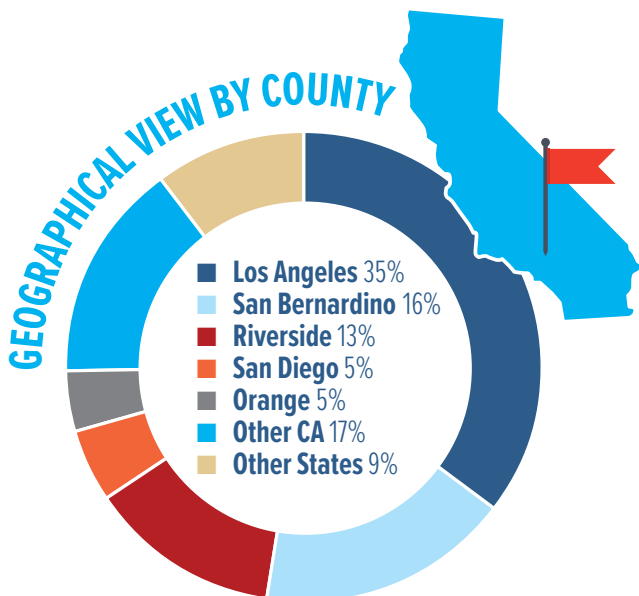
*of those who applied for FAFSA

B.

STUDENT INFORMATION

ACADEMIC YEAR 2022-23

Undergraduate and Graduate Students



TOP 10 SCHOOLS FROM WHICH LAPU STUDENTS TRANSFER

96% of degree-seeking undergraduate students transferred from other colleges

SCHOOL NAME	STUDENTS	2 YR or 4 YR	PUBLIC or PRIVATE	PROFIT or NONPROFIT
Chaffey College	143	2	Public	Nonprofit
Mount San Antonio College	114	2	Public	Nonprofit
Citrus College	104	2	Public	Nonprofit
Pasadena City College	98	2	Public	Nonprofit
East Los Angeles College	98	2	Public	Nonprofit
Riverside City College	91	2	Public	Nonprofit
San Bernardino Valley College	85	2	Public	Nonprofit
University of Phoenix	74	4	Private	Profit
American Career College	73	2	Private	Profit
Victor Valley College	68	2	Public	Nonprofit

TOP LEAD SOURCES OF ENROLLMENTS



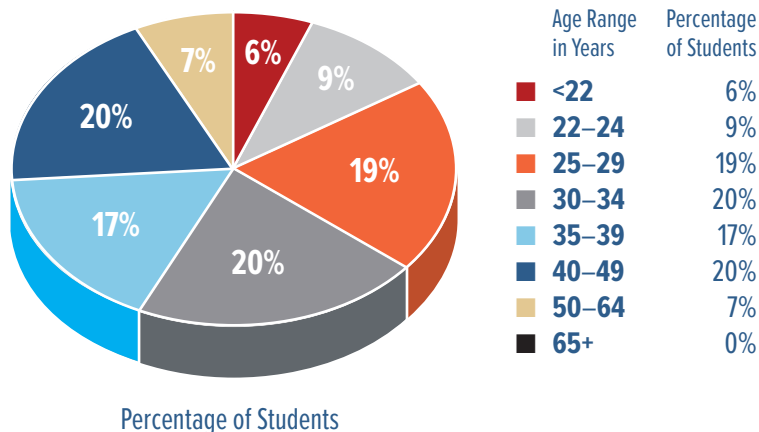
INCOME LEVEL GROUPS

Among students who applied for FAFSA



Income Level Group	Count	Rate
<\$30,001	1049	44.6%
<\$48,001	477	20.3%
<\$75,001	415	17.6%
<\$110,001	239	10.2%
>\$110,000	230	9.8%

AGE GROUPS



C.

DEGREES AND CERTIFICATES AWARDED

ACADEMIC YEAR 2022-23

TOTAL DEGREES AWARDED

Associate	84
Bachelor's	190
Master's	80
TOTAL DEGREES	354



ETHNICITY

Hispanics of Any Race	135	38%
White	75	21%
Black or African American	71	20%
Asian	29	8%
Race and Ethnicity Unknown	24	7%
Two or More Races	13	4%
Native Hawaiian or Other Pacific Islander	7	2%
American Indian or Alaska Native	0	0%

GENDER



MALE 21%



FEMALE 77%

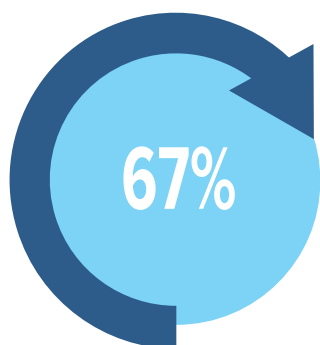
D.

STUDENT SUCCESS

ACADEMIC YEAR 2022-23

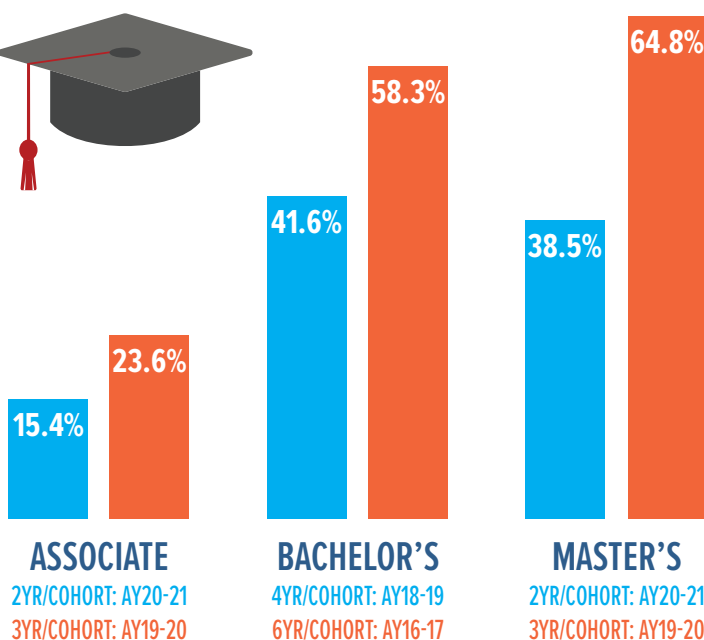
Undergraduate and Graduate Students

AVERAGE STUDENT RETENTION



All undergraduate degree-seeking students enrolled in 2021 CY, still enrolled one year later

GRADUATION RATES



*AY = ACADEMIC YEAR

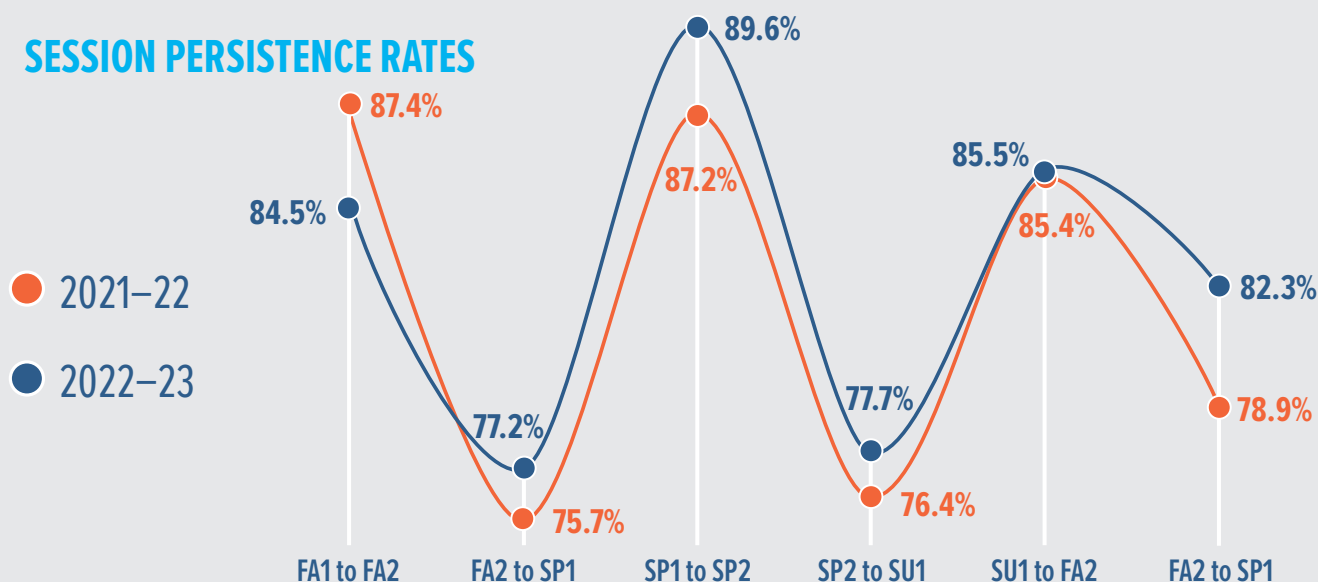
D.

STUDENT SUCCESS

CONTINUED

Undergraduate and Graduate Students

SESSION PERSISTENCE RATES



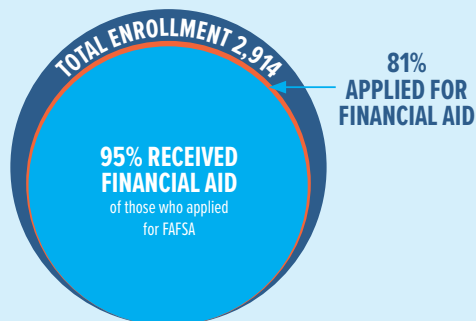
E.

FINANCIAL FACTS

ACADEMIC YEAR 2022-23

Undergraduate and Graduate Students

FINANCIAL AID



COURSES WITH OER TEXTBOOKS

OPEN EDUCATIONAL RESOURCES


17.7%

AS OF AUGUST 2023

 No Resource Cost Courses:
31.1%

AFFORDABILITY

AVERAGE COST OF TUITION

AMONG 4-YEAR, PRIVATE NOT-FOR-PROFIT UNIVERSITIES IN CALIFORNIA*


\$34,200 OTHERS

— VS —

\$11,400 LAPU

*Regionally accredited institutions in California

SOURCE: U.S. Department of Education College Affordability and Transparency List (<https://collegecost.ed.gov/affordability>)

STUDENTS RECEIVING FINANCIAL AID

71%
Federal
Loans

41%
Pell
Grants

53%
Other Aid

LOS ANGELES PACIFIC
UNIVERSITY

Rev 10-2023

Connect with Us



Facebook: /LAPacificU



X: @LAPacificU



Instagram: @LAPacificU



LinkedIn: /school/LAPacificU



YouTube: /LosAngelesPacificUniversity