

A. GENERAL ENROLLMENT

CALENDAR YEAR 2022
Undergraduate and Graduate Students

HEADCOUNT ENROLLMENT

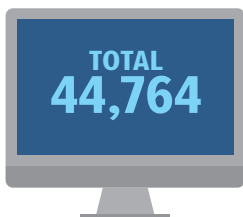


UG 2,771
+
GR 335

ENROLLMENT STATUS



TOTAL ENROLLED UNITS



UG 40,957
+
GR 3,807

GENDER



MALE 18%

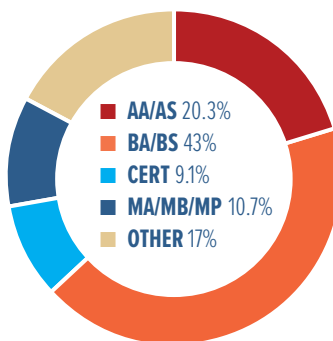


FEMALE 80%

DEMOGRAPHICS OF STUDENTS

Hispanics of Any Race	44%
White	18%
Black or African American	18%
Asian	9%
Race and Ethnicity Unknown	5%
Two or More Races	4%
Native Hawaiian or Other Pacific Islander	1%
American Indian or Alaska Native	0%

ACADEMIC GOALS



NEW STUDENTS

44% | 1,372

UG 1,261 + GR 111



OTHER SIGNIFICANT DEMOGRAPHICS

68.9%
FAFSA Applied

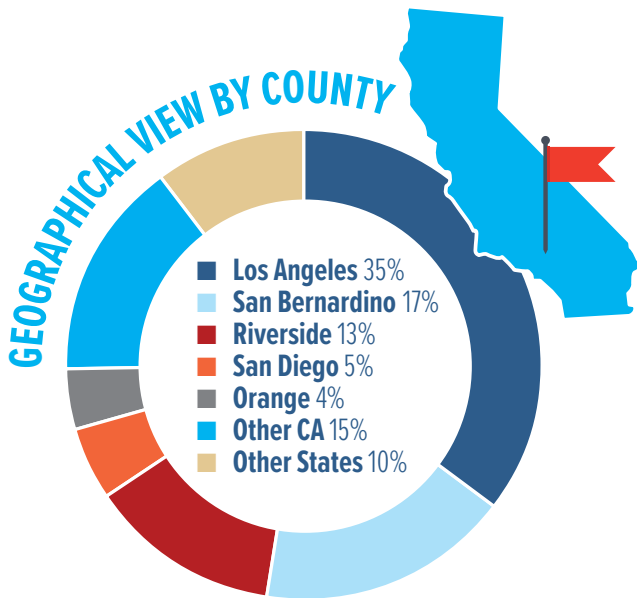
*of those who applied for FAFSA

29.6%
Single Parent*

47.3%
First Generation*

B. STUDENT INFORMATION

CALENDAR YEAR 2022
Undergraduate and Graduate Students

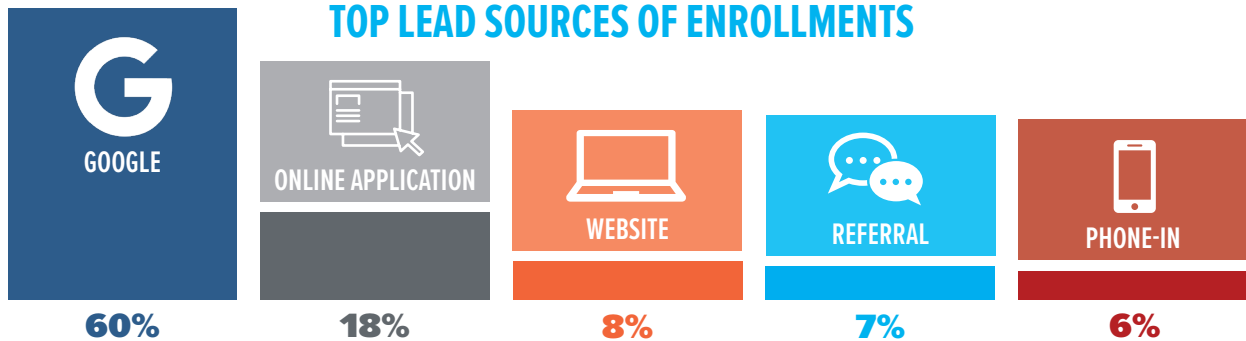


TOP 10 SCHOOLS FROM WHICH LAPU STUDENTS TRANSFER

66% of degree-seeking undergraduate students transferred from other colleges

SCHOOL NAME	STUDENTS	2 YR or 4 YR	PUBLIC or PRIVATE	PROFIT or NONPROFIT
Chaffey College	149	2	Public	Nonprofit
Citrus College	120	2	Public	Nonprofit
Mount San Antonio College	117	2	Public	Nonprofit
Pasadena City College	110	2	Public	Nonprofit
Riverside City College	110	2	Public	Nonprofit
San Bernardino Valley College	99	2	Public	Nonprofit
East Los Angeles College	85	2	Public	Nonprofit
American Career College	81	2	Private	Profit
Los Angeles Southwest College	78	2	Public	Nonprofit
Victor Valley College	77	2	Public	Nonprofit

TOP LEAD SOURCES OF ENROLLMENTS



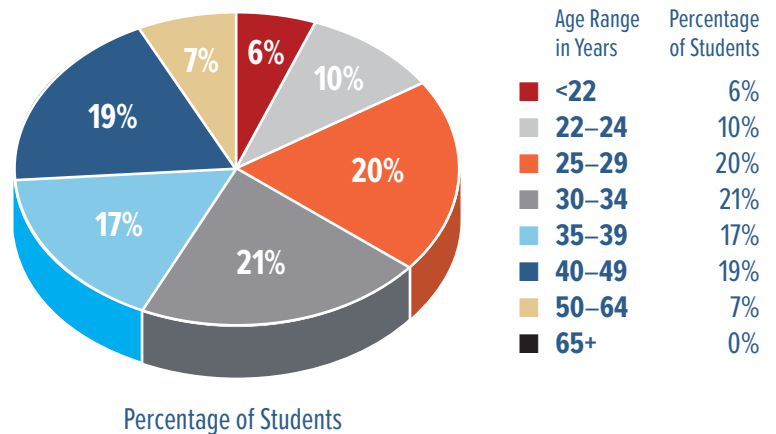
INCOME LEVEL GROUPS

Among students who applied for FAFSA 2022



Income Level Group	Count	Rate
Unknown	551	18%
<\$30,001	1,130	36%
<\$48,001	512	17%
<\$75,001	447	14%
<\$110,001	226	7%
>\$110,000	233	8%

AGE GROUPS




C. DEGREES AND CERTIFICATES AWARDED

CALENDAR YEAR 2022

TOTAL DEGREES AWARDED

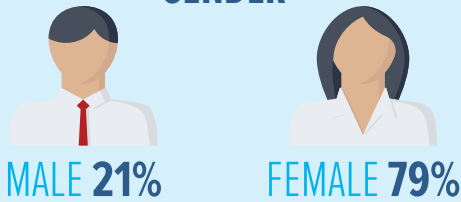
Associate	85
Bachelor's	231
Master's	101
TOTAL DEGREES	417



ETHNICITY

Hispanics of Any Race	168	40%
White	95	23%
Black or African American	73	18%
Race and Ethnicity Unknown	40	10%
Asian	22	5%
Two or More Races	12	3%
Native Hawaiian or Other Pacific Islander	6	1%
American Indian or Alaska Native	1	0%

GENDER

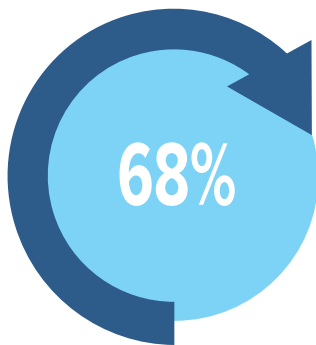


D. STUDENT SUCCESS

CALENDAR YEAR 2022

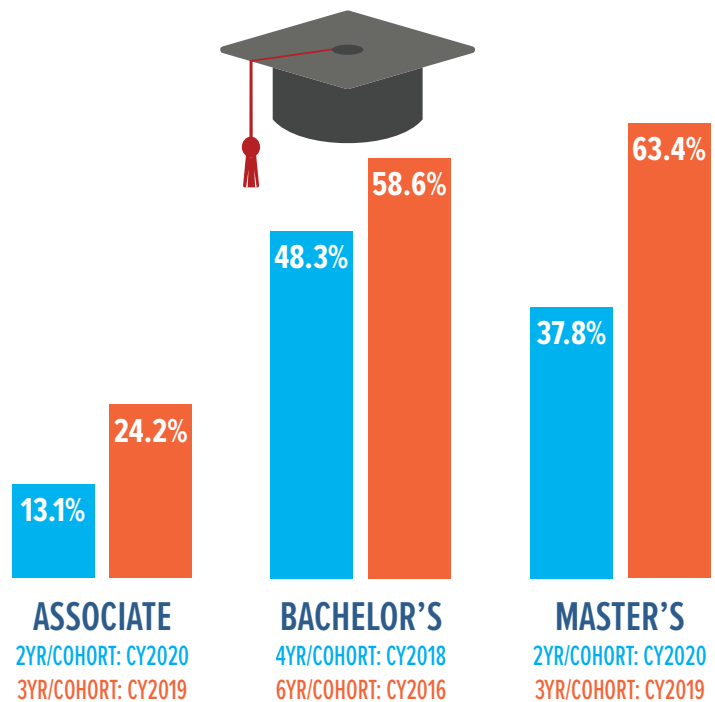
Undergraduate and Graduate Students

AVERAGE STUDENT RETENTION



All undergraduate degree-seeking students enrolled in 2021 CY, still enrolled one year later

GRADUATION RATES

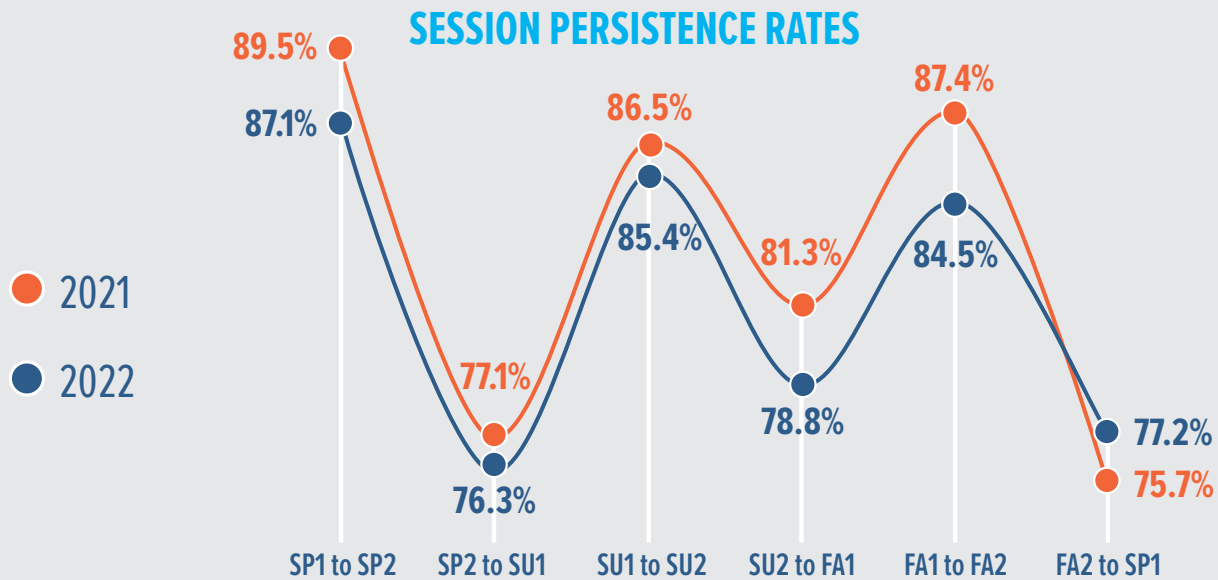


*CY = ACADEMIC YEAR

D.

STUDENT SUCCESS CONTINUED

Undergraduate and Graduate Students



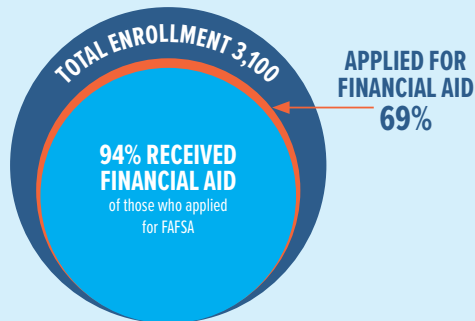
E.

FINANCIAL FACTS

CALENDAR YEAR 2022

Undergraduate and Graduate Students

FINANCIAL AID



AFFORDABILITY

AVERAGE COST OF TUITION

AMONG 4-YEAR, PRIVATE NOT-FOR-PROFIT UNIVERSITIES IN CALIFORNIA*

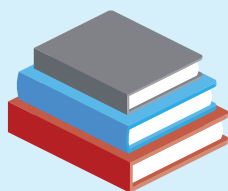


*Regionally accredited institutions in California

SOURCE: U.S. Department of Education College Affordability and Transparency List (<https://collegecost.ed.gov/affordability>)

COURSES WITH OER TEXTBOOKS

OPEN EDUCATIONAL RESOURCES

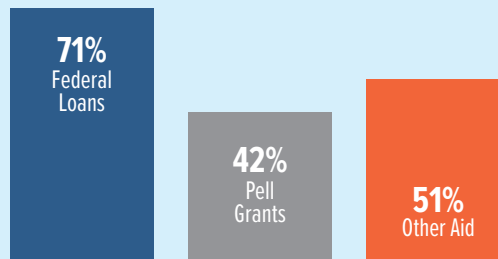


17.9%

AS OF DECEMBER 2022

No Resource Cost Courses:
29.9%

STUDENTS RECEIVING FINANCIAL AID



**LOS ANGELES PACIFIC
UNIVERSITY**

Rev 2-2023

Connect with Us

- Facebook: /LAPacificU
- Twitter: @LAPacificU
- Instagram: @LAPacificU
- LinkedIn: /school/LAPacificU
- YouTube: /LosAngelesPacificUniversity